



CONSTRUCTION
PROFILE

About Skyline Builder

Skyline Builders is a prominent construction company known for its expertise in constructing high-quality road infrastructure, educational buildings, and commercial complexes. With a strong presence in the construction market, Skyline Builders has established itself as a trusted brand in the industry.

Founded in 2010, Skyline Builders has garnered a reputation for delivering projects that combine innovative design, superior craftsmanship, and meticulous attention to detail. The company is committed to creating sustainable and eco-friendly living spaces that cater to the evolving needs of its customers.

Skyline Builders' portfolio encompasses a diverse range of properties, including road construction, educational buildings, and commercial complexes. These projects are characterized by a strong adherence to strict quality standards and a dedication to meeting client requirements.

One of the key strengths of Skyline Builders is its team of experienced professionals who bring their expertise and passion to every project. The company places a strong emphasis on customer satisfaction and strives to build long-term relationships with its clients by providing exceptional service and ensuring timely project delivery.

In addition to its commitment to quality construction, Skyline Builders also focuses on incorporating the latest technologies and sustainable practices in its projects. The company stays abreast of industry advancements and seeks to implement environmentally friendly solutions.

Skyline Builders is a renowned construction company known for its commitment to excellence, innovation, and customer satisfaction. With a strong track record of successful projects, the company continues to play a significant role in shaping the construction landscape.



CORPORATE PORTFOLIO

Name of the Company	: Skyline Builders
Legal Position	: Private Limited Company
Chairperson & Managing Director Director	: Mousumi Islam : Samanta Islam
Contact No.	: +88 02 9556443
Email	: info@skylinebd.com , eng.civil@skylinebd.com
Website	: www.skylinebd.com
Corporate Address	: Shanta Forum, 187, 188/B Tejgaon Link Road, Dhaka



CORPORATE OFFICE

Building for a healthier future: Skyline's commitment to safety and quality in construction

Skyline has been involved in various construction projects over the past few years, and despite our primary focus being on the healthcare sector, we have been able to successfully execute and deliver high-quality construction projects. Our commitment to delivering the best service to our clients is reflected in our stringent health and safety records on our sites. We are dedicated to ensuring that all of our projects are completed in compliance with the latest industry standards and regulations.

Quality assurance and quality control are of the utmost importance to us, and we have implemented robust systems to ensure that the work we produce is of the highest standard. Our team of experts have a wealth of experience in the industry and possess the necessary skills and knowledge to ensure that each project is completed to the highest quality.

We have a strong track record of delivering viable projects on time and within budget, and this is due to our ability to identify and manage any potential risks and issues that may arise during the construction process. We work closely with our clients to fully understand their requirements and ensure that their expectations are exceeded.

In summary, Skyline is dedicated to delivering the highest quality construction projects while maintaining the best health and safety records. Our team of experts possess the necessary skills and knowledge to ensure that each project is completed to the highest standard, on time, and within budget. We believe in providing our clients with complete peace of mind and satisfaction.



WHAT WE ARE WORKING ON



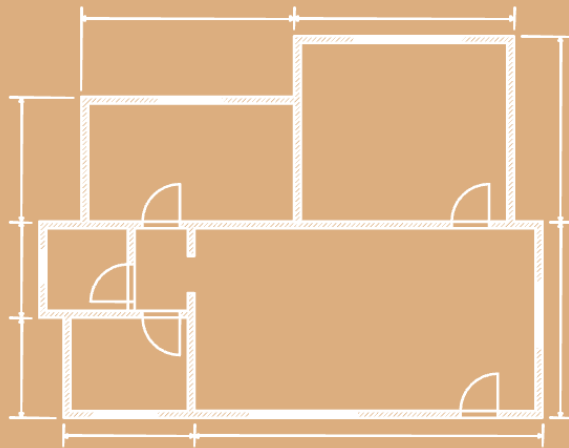
**Educational
Institute**



Road

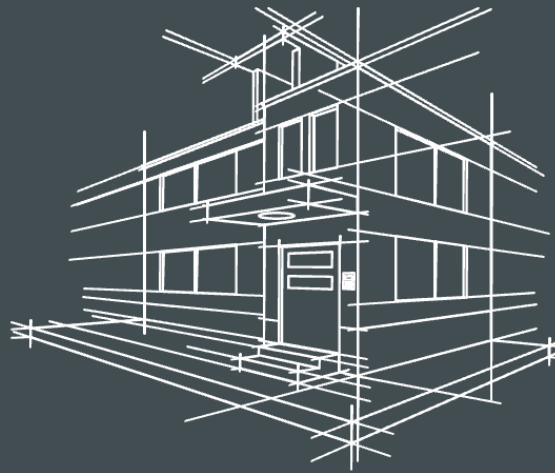


Commercial



30

PROJECTS COMPLETED



24 PROJECTS ONGOING

OUR EQUIPMENTS

- Building Construction Machinery
- Light Machinery
- Heavy Machinery
- Road Construction Machinery
- Bridge Construction Machinery
- Tunnels Construction Machinery
- Dams Construction Machinery
- Canals Construction Machinery
- Airports Construction Machinery



Thank You